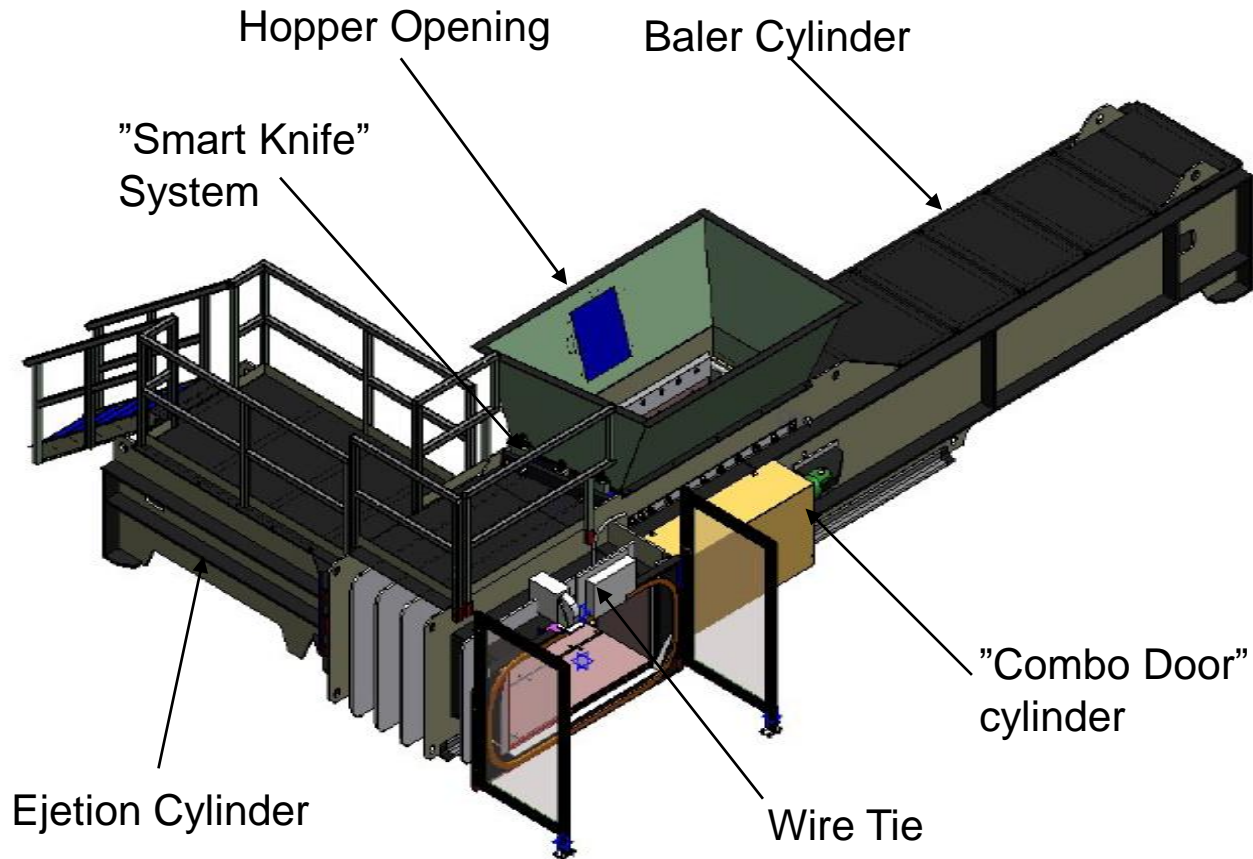


# Harris

## 2 Ram Balers



# Layout 2 Ram Baler



# 2 Ram Baler



Hydraulics with oil cooler

Control Panel

Outlet plate

Safety Doors

Wire magazine  
approx. 800 kg



# Important Details

---

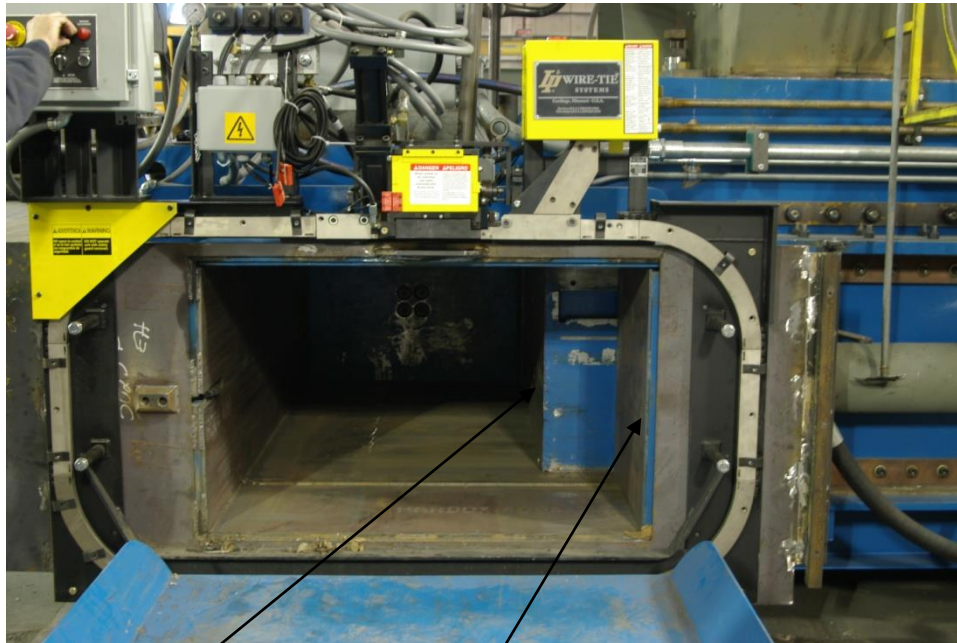
- ❖ Combo Door™
  - ❖ 2 stage opening, so that "oversized" bales can come out easily
- ❖ SmartKnife™ System
  - ❖ Simple blade adjustment using adjustment bolts
- ❖ Hardox 450-500 Liners
- ❖ Loosely suspended press- and reject ram
- ❖ Flame-hardened piston rods with special Teflon base gasket
- ❖ Skyjacker™ System
  - ❖ Makes it possible to change "Liners" without dismantling the machine
- ❖ PLC controlled machine with the possibility of 20 programs
- ❖ Tying of a bale
  - ❖ The number of wire is variable and is determined based on the material



# Combo Door™

Purpose:

In case of oversized bales, the door can be opened a further 2-300 mm.



Main Ram

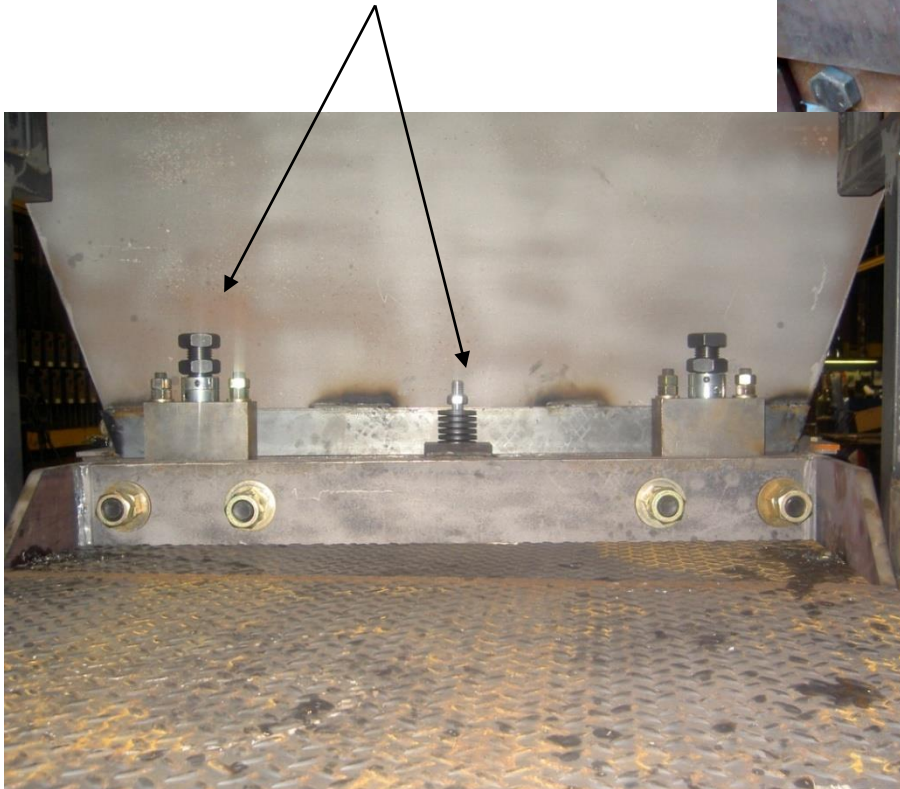
"Combo Door"  
completely open

"Combo Door"  
closed



# Smart Knife System™

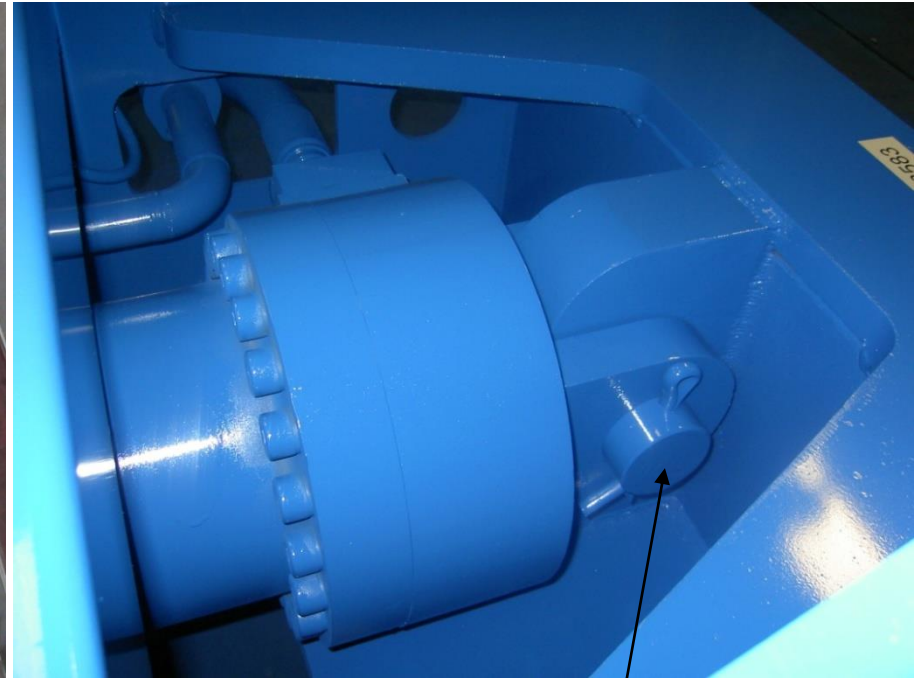
"Smart Knife" System. Used to adjust the distance between knife and ram.



The knife, Badger Baler.



# Hardox Base Plates



Loosely  
suspended ram

Hardox bottom and side  
plates in AR450-500

# Control Panel

PLC control with  
20 programs

Buttons and switches  
for manual or  
automatic operation



Joystick for  
ejection function

Joystick for  
baler door

Joystick for press  
function

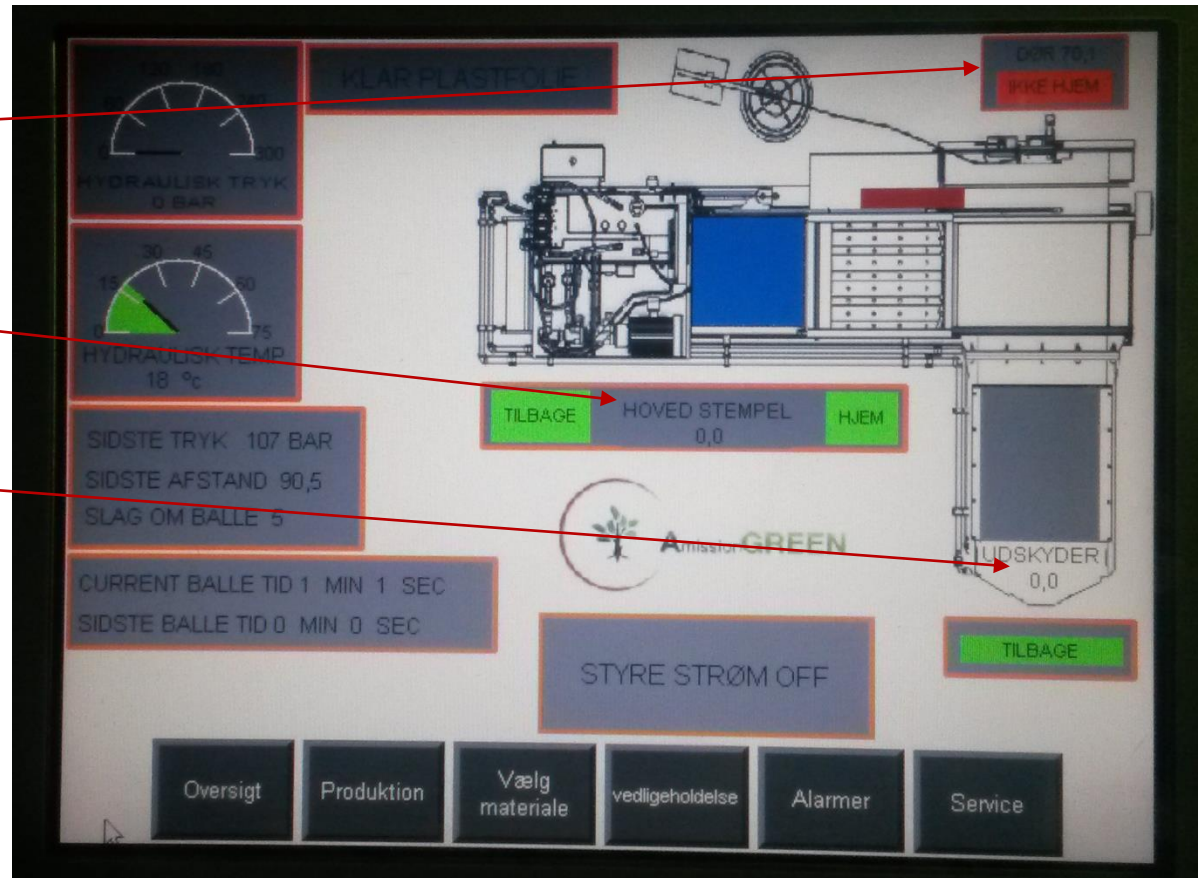


# Color Display

"Combo door"  
position

Main ram position

Ejection ram position



# Wire-Tie System



# Wolwerine

- ❖ Hopper opening:  
*1067 x 1524 mm*
- ❖ Main cylinder force:  
*80 ton*
- ❖ Capacity OCC:  
*4,5 – 7,0 t/h*
- ❖ Bale weight OCC:  
*408 - 600 kg*
- ❖ Bale size:  
*79 x 114 x 155 cm.*
- ❖ Cycle time empty:  
*21 sec.*





# Badger S2, L

---

- ❖ Hopper opening:  
*1651 x 2388 mm*
- ❖ Main cylinder force:  
*124-151 ton*
- ❖ Capacity OCC :  
*7-10 t/h*
- ❖ Bale weight OCC :  
*521 – 730 kg*
- ❖ Bale size:  
*79 x 114 x 155 cm.*
- ❖ Cycle time empty:  
*16 sec.*



# Badger S4, L

- ❖ Hopper opening:  
*651 x 2388 mm*
- ❖ Main cylinder force :  
*24-151 ton*
- ❖ Capacity OCC:  
*9-12,0 t/h*
- ❖ Bale weight OCC:  
*521 – 730 kg*
- ❖ Bale size:  
*79 x 114 x 155 cm.*
- ❖ Cycle time empty:  
*7,3 sec.*



# Gorilla 200T

- ❖ Hopper opening:  
*2184 x 2787 mm*
- ❖ Main cylinder force:  
*210 ton*
- ❖ Capacity OCC:  
*27,0 t/h*
- ❖ Bale weight OCC:  
*544 – 800 kg*
- ❖ Bale size.:  
*79 x 114 x 160 cm*
- ❖ Cycle time empty:  
*10,6 sec.*





# Centurion 150

- ❖ Hopper opening:  
*2184 x 2908 mm*
- ❖ Main cylinder force:  
*210 ton*
- ❖ Capacity OCC:  
*17-30 t/h*
- ❖ Bale weight OCC:  
*567 – 800 kg*
- ❖ Bale size.:  
*79 x 114 x 162 cm*
- ❖ Cycle time empty:  
*15,0 sec.*
- ❖ Shipping weight:  
*46 tons*



# Centurion 200

- ❖ Hopper opening:  
*2184 x 2908 mm*
- ❖ Main cylinder force:  
*210 ton*
- ❖ Capacity OCC:  
*23-44 t/h*
- ❖ Bale weight OCC:  
*567 – 800 kg*
- ❖ Bale size:  
*79 x 114 x 162 cm*
- ❖ Cykle time empty:  
*10 sec.*
- ❖ Shipping weight:  
*48 tons*



# HRB 1445

- ❖ Hopper opening:  
*1900 x 3353 mm*
- ❖ Main cylinder force:  
*410 ton*
- ❖ Capacity MSW:  
*45-55 t/h*
- ❖ Bale weight MSW:  
*1250 – 1550 kg*
- ❖ Bale size:  
*110 x 114 x 155 cm*
- ❖ Shipping weight:  
*72 tons*





# HRB 1545 W

---

- ❖ Hopper opening:  
*2100 x 3350 mm*
- ❖ Main cylinder force:  
*410 ton*
- ❖ Capacity MSW:  
*54-74 t/h*
- ❖ Bale weight MSW:  
*1250 – 1550 kg*
- ❖ Bale size:  
*147 x 112 x 165 cm*
- ❖ Shipping weight:  
*74 tons*



## 2 Ram Balers



**Note!** The above models in the product range are available in various variants.

Here you see two Centurion balers from Denmark and Norway.



# Freight – Centurion Baler



To transport the press is used  
1 piece 40' container and 1 piece 40'  
Flat Rack.





# Freight – Badger Baler

---



Emptying the container using a crane and a front loader

❖ 2 pcs. 40' containers

# Assembly of a 2 Ram Baler

---

Badger S2.  
Ready for  
operation





# Wamatech Service

---



- ❖ Wamatech service is:
  - ❖ Installation and commissioning of plants.
  - ❖ Option of service contracts at our facility.
  - ❖ Extensive spare parts stock. We can usually deliver the most common parts within a few days.